

REPLICA STEEL

RENEW REBUILD RECLAIM

PREMIUM WINDOWS & DOORS
SYNCOMM WINDOWS & DOORS
A PART OF THE SYNERGY GROUP OF COMPANIES



REPLICA STEEL

INNOVATIVE WINDOWS & DOORS



2

Experience the best of both worlds with **Syncomm Replica Steel Aluminum Windows**.

Experience the allure of classic steel-inspired windows and enjoy the benefits of aluminum, including cost-effectiveness, enhanced security, and improved thermal efficiency.

Upgrade your space today and enjoy a window solution that surpasses expectations.



REPLICA STEEL

PREMIUM WINDOWS & DOORS



4

Explore the power of aluminum – a material that combines strength, flexibility, recyclability, and style. Discover limitless possibilities with a material that will revolutionize your projects.

Unleash your creativity and embrace a sustainable future with the remarkable qualities of **aluminum**.



REPLICA STEEL

INNOVATIVE WINDOWS & DOORS



6

Introducing the **Syncomm Replica Steel Door**: a seamless blend of sophisticated design and unparalleled resilience, engineered to endure the rigors of commercial applications for countless years.

Offering an extensive selection of design variations and personalized customization features, you have the power to craft a door that impeccably aligns with your unique aesthetic inclinations and precise specifications.



REPLICA STEEL

SPECIFICATIONS

The **SynComm Replica Steel** is an aluminum window system designed for homes, churches, institutions and warehouse renovations used to replace old inefficient steel windows.

EXTENDALINE-Model SC5916

- > 5-9/16" front to back dimensions (141mm)
- > Select single, multiple fixed or floating awning (push out only)

HINGED DOOR-Model SD5000/KD

- > 4-7/8" front to back dimensions (129mm)
- > Select single or double door. With or without transom

Specifications & Details

- > Extruded aluminium construction
- > Nominal frame/sill wall thickness: 0.125" (3.175mm)
- > Variety of muntins & applied grids, replicates historic steel profiles (Putty bars)
- > Slim-line integral and fixed-stack mull for minimal sightlines
- > Stainless steel concealed hinges
- > Black or satin nickel cam lock hardware
- > Overlap of vent to frame for historic replication
- > Operating window, awning, out-swing only

TYPE	AAMA RATING TEST SIZE	VENTS SIZE (INCHES)	AIR (cfm/ft²) at 50 mpg	WATER (psf)	DESIGN PRESSURE (psf)	STRUCTURAL OVERLOAD (psf)	U-VALUE 9BTU/HR/ ft²/p
AWNING	PG100 60 x 36	58-1/2 x 34-1/2	0.2	15.04	60.15	150.38	0.31
FIXED	PG110 60 x 99	N/A	0.2	15.04	60.15	165.41	0.31

NOTE: The air infiltration and water resistance performance values provided above were achieved in a controlled lab environment. Performance of our products in the field will vary depending on product configurations, installation methods, and ambient conditions. AAMA 502 "Voluntary Specification for Field Testing of Newly Installed Fenestration Products" should be adhered to for testing installed products.

¹ U-values will vary depending upon glazing selected

Painted finishes; select level of protection



AAMA 2603 is a standard that specifies the minimum requirements for an organic coating on aluminum extrusions and panels used in architectural applications. This standard is typically applied to coatings used in non-structural applications where color retention and protection against weathering are important but not critical. AAMA 2603 coatings provide a basic level of performance and are often used for interior applications or on buildings with limited exposure to sunlight and harsh environmental conditions.

AAMA 2605 is the highest-performance standard. It establishes the most stringent requirements for organic coatings on aluminum used in architectural applications. Coatings that meet AAMA 2605 standards are engineered to provide superior long-term color retention, resistance to chalking, fading, and chemical exposure, as well as exceptional weathering performance. These coatings are typically recommended for high-end architectural projects, such as high-rise buildings, where long-term durability and aesthetics are critical.

Performance evaluation performed in accordance with

- ANSI-NFRC 100/ANSI-NFRC 200/ NFRC 500

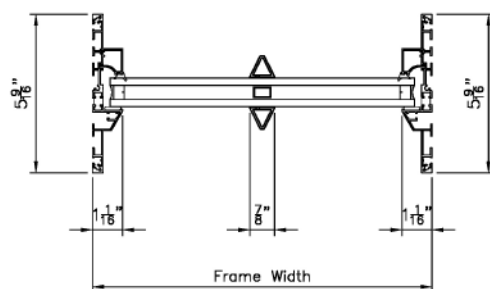
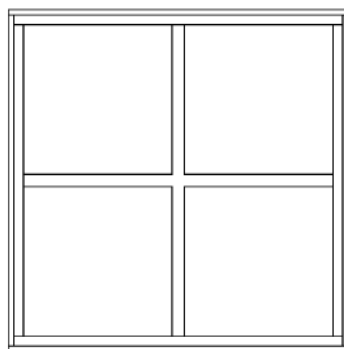
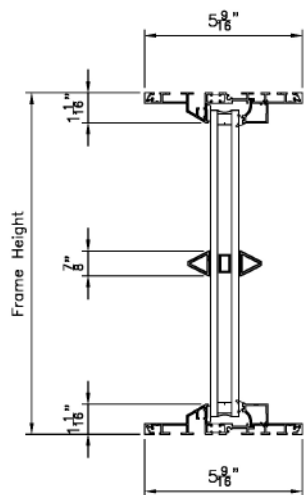
CROSS SECTIONAL DETAILS

E

EXTEND-A-LINE
FIXED & AWNING WINDOW
5-9/16th DEPTH

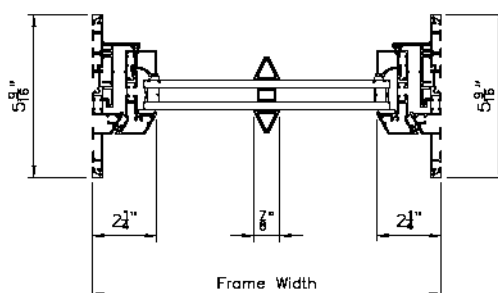
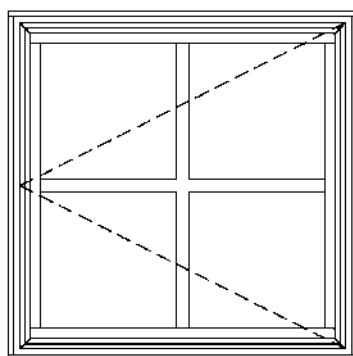
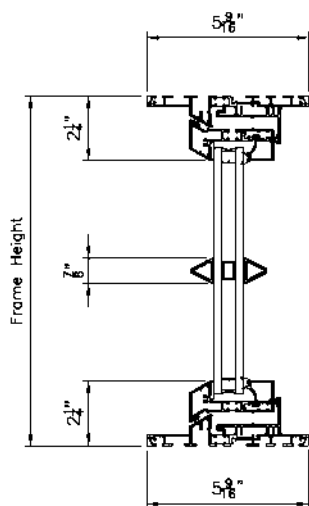
FIXED

MODEL:SC5916/FX



AWNING

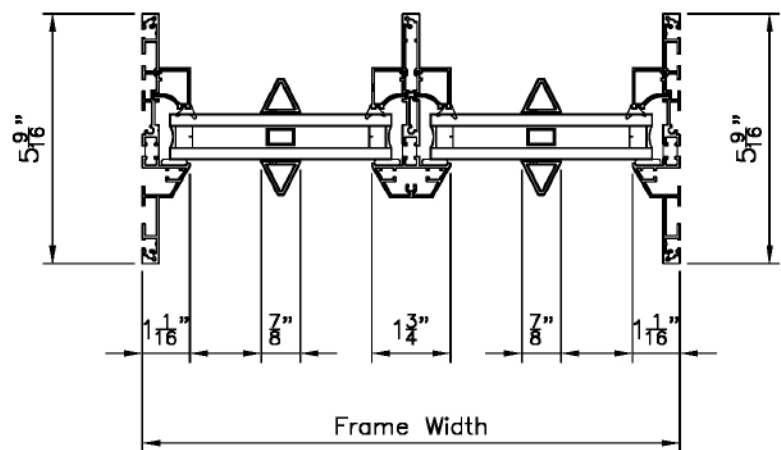
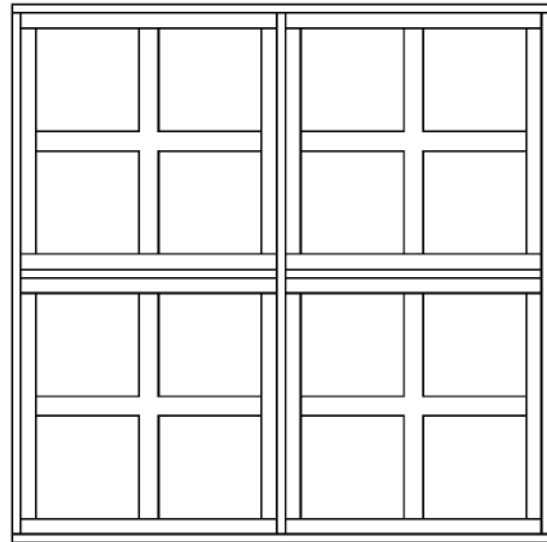
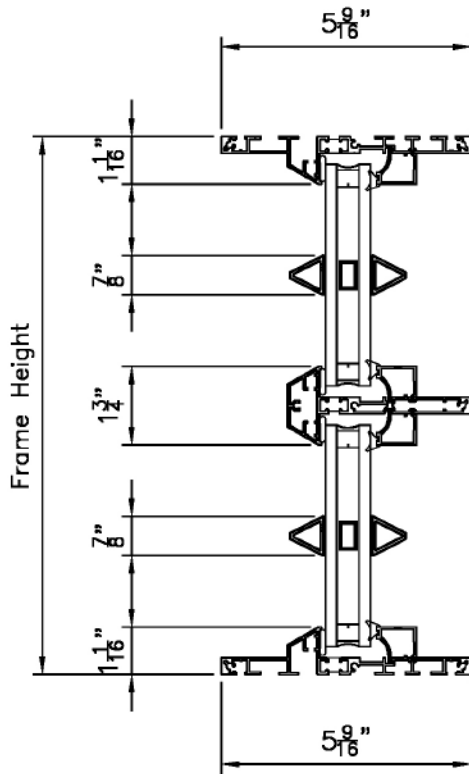
MODEL:SC5916/AW



CROSS SECTIONAL DETAILS



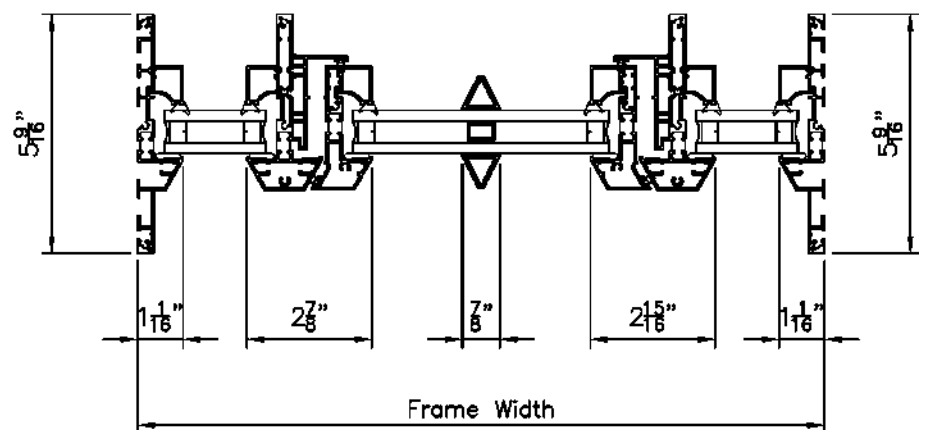
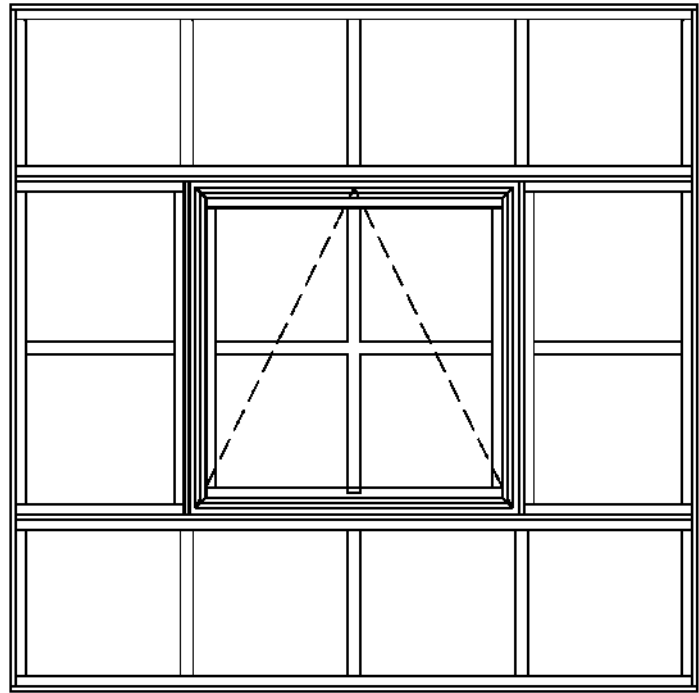
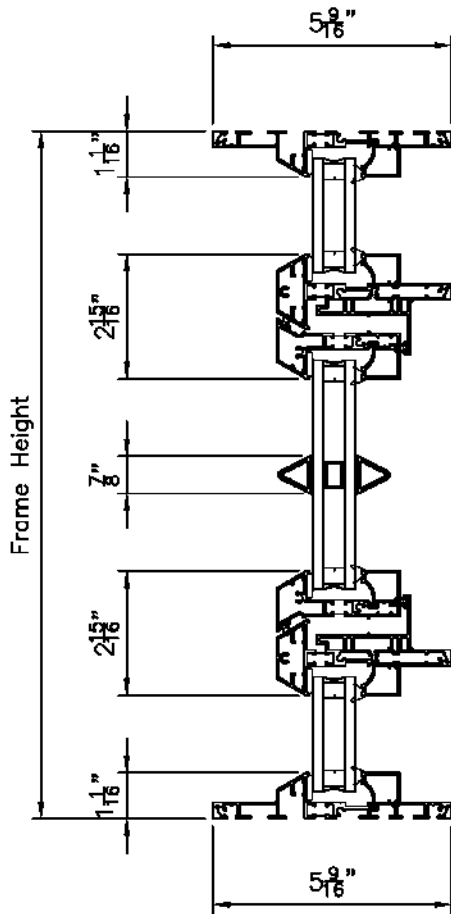
EXTEND-A-LINE
FIXED WINDOW W/MULLIONS
5-9/16th DEPTH
MODEL: **SC5916/ML**



CROSS SECTIONAL DETAILS

E

EXTEND-A-LINE
FIXED W/AWNING WINDOW
5-9/16th DEPTH
MODEL: **SC5916/FX**
mulled to **SC5916/AW**

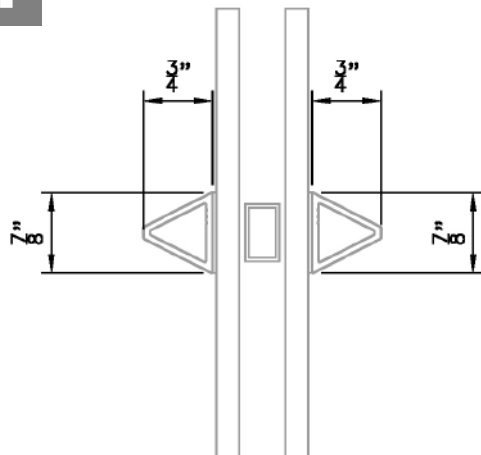


REPLICA STEEL

DETAILS SDL

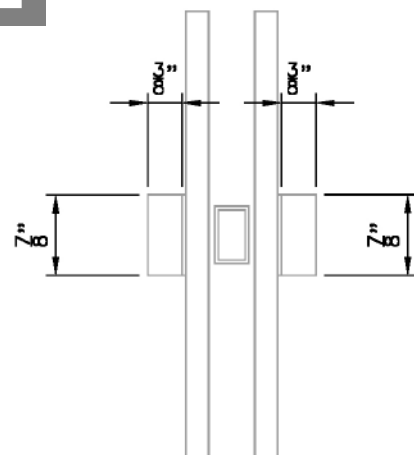
Simulated Divided Lights

1



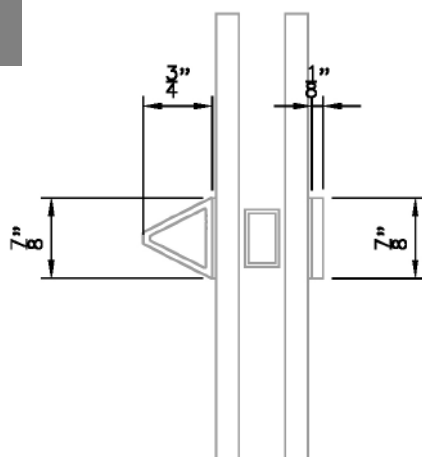
7/8" Putty Bar

2



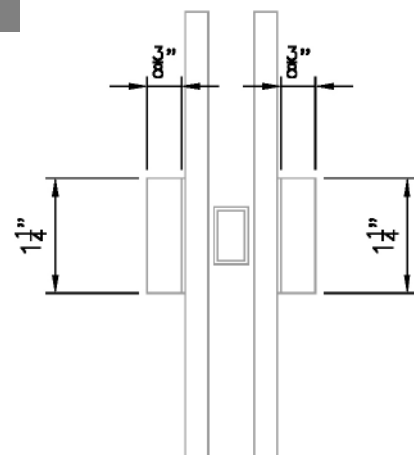
3/8" x 7/8" Flat Bar

3



7/8" Putty Bar x 7/8" Flat Bar

4



1-1/4" Flat Bar

REPLICA STEEL

WINDOW OPTIONS

Glazing (Insulating Glass)	
Dual-pane insulating glass (LoE ² -272)	S
Dual-pane insulating glass (LoE-180ESC)	<input type="radio"/>
Dual-pane insulating glass (LoE-Di89)	<input type="radio"/>
Additional Glazing Options	
Annealed glass	<input type="radio"/>
Tempered glass	<input type="radio"/>
Laminated glass, LoE ² -272 and/or 366	<input type="radio"/>
Gray tint	<input type="radio"/>
Bird glass	<input type="radio"/>
Solar cooled	<input type="radio"/>
Bronze tint	<input type="radio"/>
Noise reduction glass ¹ (OITC 3mm/5mm)	<input type="radio"/>
Noise reduction laminated glass (non-impact)	<input type="radio"/>
High altitude	<input type="radio"/>
Satin etched glass (Obscure)	<input type="radio"/>
Glazing Add-ons	
Preserve (protective glass film)	<input type="radio"/>
Hardware	
Awning grip operator (Silver)	S

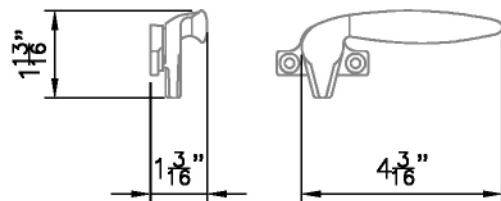
Vent Limiter	
4" vent limiter	<input type="radio"/>
Screen	
Black fiberglass screen - flat	S
Grilles (Simulated Divided Lites)	
7/8" X 3/4" replica putty bar, specify color	<input type="radio"/>
7/8" x 1/8" flat bar, painted black	<input type="radio"/>
7/8" x 3/8" flat bar, painted black	<input type="radio"/>
1-1/4" x 3/8" flat bar, painted black	<input type="radio"/>
Between the glass spacer bar, black	<input type="radio"/>
Interior / Exterior Color	
White/white ²	<input type="radio"/>
Black/black ²	S
Iron ore/iron Ore ²	<input type="radio"/>
Split finish ² (one color out/another color in)	<input type="radio"/>
Other painted finish ²	<input type="radio"/>
Anodized clear or anodized black	<input type="radio"/>

¹ Outdoor-Indoor Transmission Class(OITC 3mm/5mm combination)

² Select from AAMA 2606, AAMA 2604 or AAMA 2605

Hardware

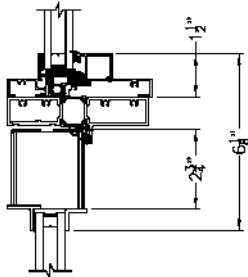
Awning Grip Operator



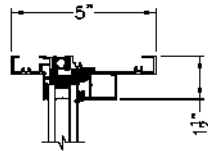
CROSS SECTIONAL DETAILS



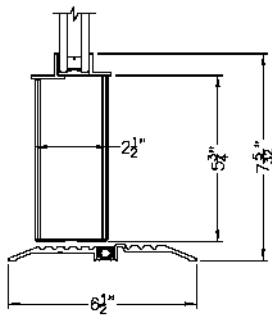
HINGED DOOR
4-7/8" DEPTH
MODEL: **SD5000/KD**



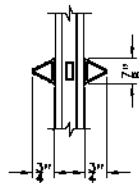
Door / Transom
Mullion Detail



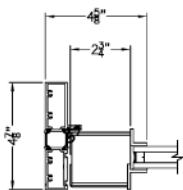
Transom
Head Detail



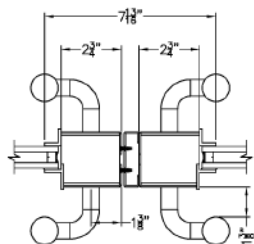
Door
Threshold Detail



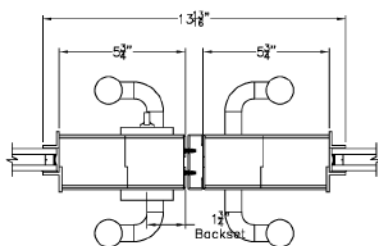
SDL Detail



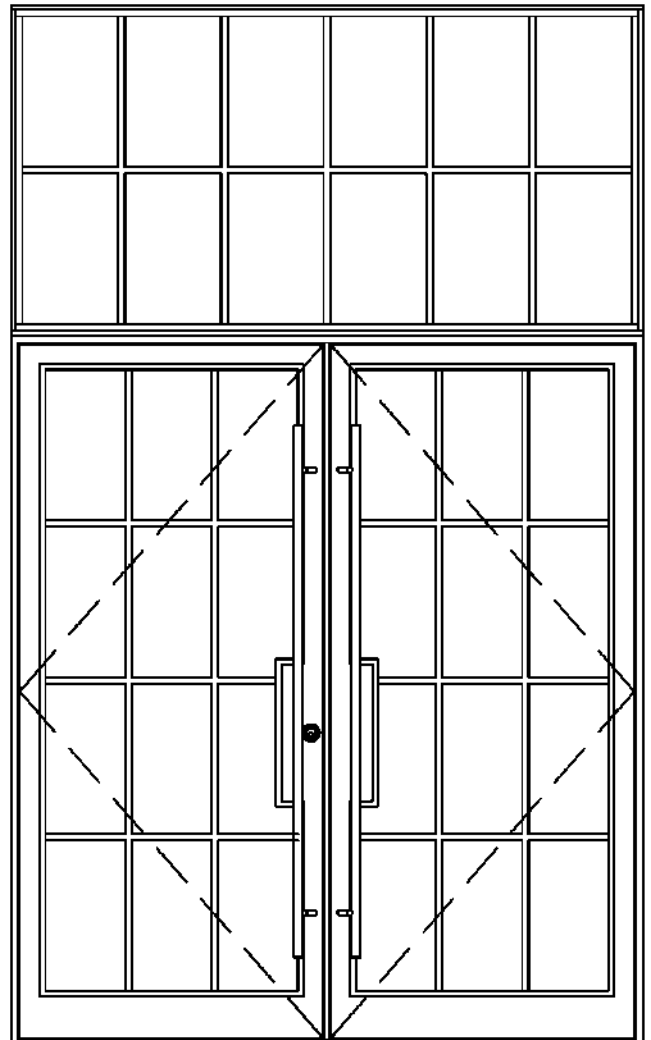
Door
Stile Detail



Door
Astragal Detail

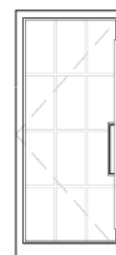


Door Lockbox
Astragal Detail

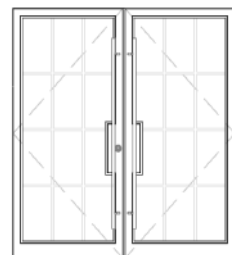


Available versions

Single



Double



REPLICA STEEL

DOOR OPTIONS

Glazing (Insulating Glass)	
Dual-pane insulating glass (LoE ² -272)	S
Dual-pane insulating glass (LoE-180ESC)	<input type="radio"/>
Dual-pane insulating glass (LoE-Di89)	<input type="radio"/>
Additional Glazing Options	
Annealed glass	<input type="radio"/>
Tempered glass	<input type="radio"/>
Laminated glass, LoE ² -272 and/or 366	<input type="radio"/>
Gray tint	<input type="radio"/>
Bird glass	<input type="radio"/>
Solar cooled	<input type="radio"/>
Bronze tint	<input type="radio"/>
Noise reduction glass ¹ (OITC 3mm/5mm)	<input type="radio"/>
Noise reduction laminated glass (non-impact)	<input type="radio"/>
High altitude	<input type="radio"/>
Satin etched glass (Obscure)	<input type="radio"/>
Glazing Add-ons	
Preserve (protective glass film)	<input type="radio"/>

Hardware	
Hinges, non-removable pin (NRP)	S
Deadbolt	<input type="radio"/>
Automatic closure	<input type="radio"/>
Pull handles	<input type="radio"/>
Panic bar w/exterior rods	<input type="radio"/>
AutoLock, multipoint locking system	<input type="radio"/>
Overhead stops	<input type="radio"/>
Grilles (Simulated Divided Lites)	
7/8" X 3/4" replica putty bar, specify color	<input type="radio"/>
7/8" x 1/8" flat bar, painted black	<input type="radio"/>
7/8" x 3/8" flat bar, painted black	<input type="radio"/>
1-1/4" x 3/8" flat bar, painted black	<input type="radio"/>
Between the glass spacer bar, black	<input type="radio"/>
Interior / Exterior Color	
White/white ²	<input type="radio"/>
Black/black ²	S
Iron ore/iron Ore ²	<input type="radio"/>
Split finish ² (one color out/another color in)	<input type="radio"/>
Other painted finish ²	<input type="radio"/>
Anodized clear or anodized black	<input type="radio"/>

¹ Outdoor-Indoor Transmission Class(OITC 3mm/5mm combination)

² Select from AAMA 2603, AAMA 2605



FEATURED

Multipoint locking system with American style,
1-1/2" x 11" escutcheon plate
Color: Flat black

Putty bars, 7/8" with dual glazed glass

INNOVATIVE SOLUTIONS

PREMIUM WINDOWS & DOORS

The Synergy Group

Synergy Windows & Doors

Ash Street Interior Doors

SynComm Windows & Doors



Front cover: @thr3eyes/Philadelphia



Synergy Group
Innovative Windows & Doors™

99 Ash Street, London, ON N5Z 4V3

T: 519-951-0909 E: info@thesynergygroupwd.com | W: thesynergygroupwd.com